



## Course Coordinators:

1. Dr. Sarbari Nag 9818039300
2. Dr. Ravish Lal 9773509676
3. Dr. Manika Gupta 9810162481  
(Department of Geology,  
University of Delhi)

## Registration Details

Click this link for registration:

<https://forms.gle/83SkhHoBsieHLszF9>

### Note:

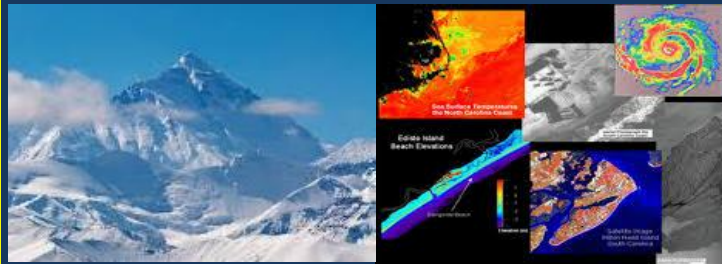
1. The Course is offered free of charge.
2. This course is mandatory for Second Year students

## ABOUT THE COURSE

The lofty beautiful Himalayas have always been awe inspiring to everybody for different reasons. The geologists are excited by the variety of rocks, structures and sequences starting from the Precambrian to the Quaternary. Variety of mineral deposits both known, expected and unknown offer a large possibility for the country and the mankind in general. The difficult terrains add to the mystery of the mountains. Frequent landslides and earthquakes need special attention as a large number of population inhabiting there and visiting for different reasons need to be protected. Further, the fact that the place had been deep down the Tethys Sea and that it is the youngest and the highest mountains in the world now due to collision between the Indian Plate and the Eurasian Plate makes study of evolution of the Himalayas a very interesting aspect for geologists.

While working on long term data on regional to global scale, importance of computational activities increases, which allow us to investigate the Earth observation data/Satellite data which are easily accessible. In this respect, we would like to enhance the basic skills of researchers in utilization of remote sensing tools. Free of charge and easily available tools are QGIS software and R-programming. This training will impart basic introduction in both QGIS software and R programming language for using remote sensing data in various areas of geosciences like land use, land cover classification and hydrological modelling. It will be a complete hands on online training with assessment tools in the form of practical assignments.

This course aims to cover different aspects of Geology including new research findings and impart knowledge of latest tools to be able to enhance understanding of not only the Himalayas and remote sensing tools, but also empower and make the students competent in serving the country as professionals.



# RAM LAL ANAND COLLEGE

UNIVERSITY OF DELHI

BENITO-JAUREZ MARG, NEW DELHI - 110021

Website- <https://rlacollege.edu.in>



DEPARTMENT OF GEOLOGY

PRESENTS

**SKILL ENHANCEMENT COURSE**

ON

***EVOLUTION OF THE HIMALAYAS AND  
INTEGRATION OF GIS STUDIES USING  
QGIS SOFTWARE & R PROGRAMMING  
LANGUAGE***

7<sup>th</sup> – 20<sup>th</sup> July 2021

**Prof. Rakesh Kumar Gupta  
Principal**